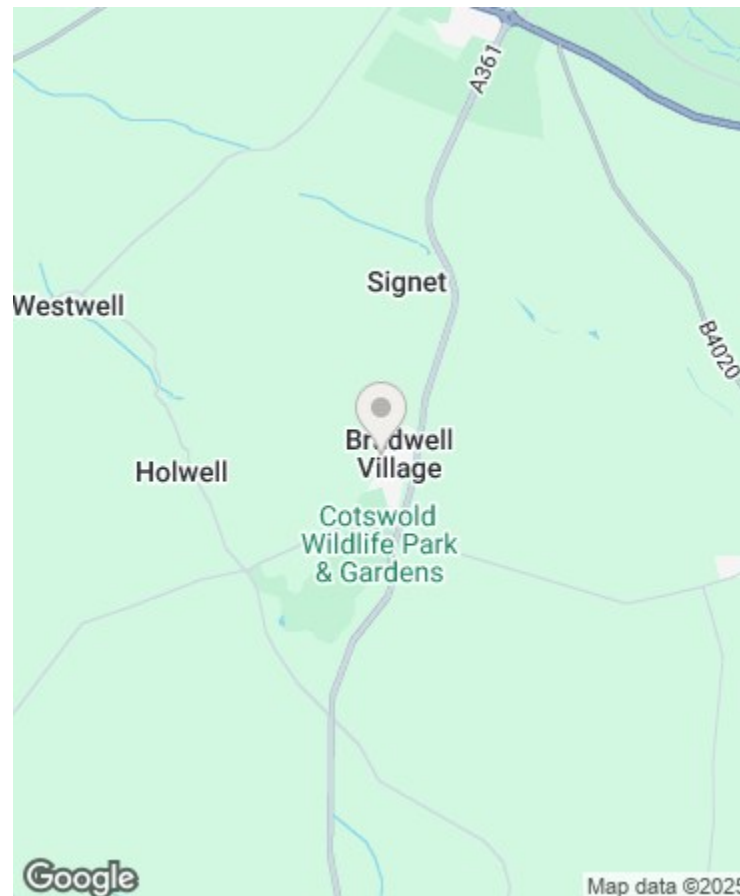




THE COTSWOLD LETTING AGENCY

BETTER BY FAR



## Directions

## Viewings

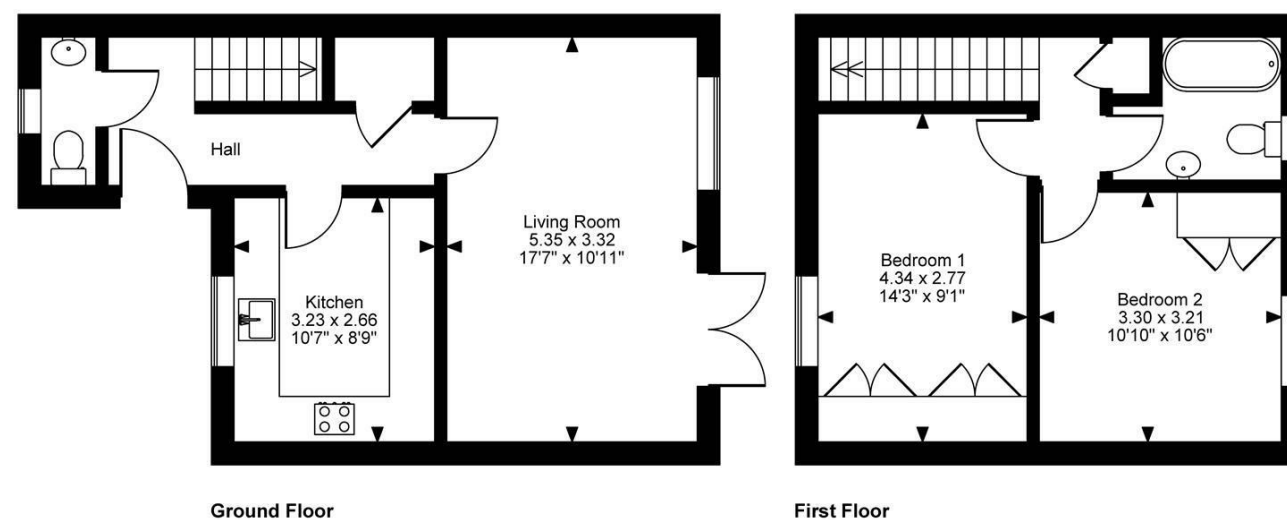
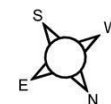
Viewings by arrangement only. Call 01993 684572 to make an appointment.

## EPC Rating

D

Energy Efficiency Rating		
	Current	Potential
Very energy efficient - lower running costs		
(92 plus) A		
(81-91) B		85
(69-80) C		
(55-68) D	64	
(39-54) E		
(21-38) F		
(1-20) G		
Not energy efficient - higher running costs		
England & Wales		
EU Directive 2002/91/EC		

Birch Drive, Bradwell Village, Burford  
Approximate Gross Internal Area  
751 Sq Ft/70 Sq M



FOR ILLUSTRATIVE PURPOSES ONLY - NOT TO SCALE

The position & size of doors, windows, appliances and other features are approximate only.  
© ehouse. Unauthorised reproduction prohibited. Drawing ref. dig/8645960/SS



Chestnut Cottage 21 Birch Drive, Bradwell Village, OX18 4XH

£2,250 Per Month

- Two generous double bedrooms
- Beautifully furnished
- Bright and airy
- Bradwell Village
- Short term let



# Chestnut Cottage 21 Birch Drive, Bradwell Village OX18

AVU

Bradwell Village is a charming and peaceful rural community nestled in the heart of the Oxfordshire countryside. Surrounded by rolling hills and scenic footpaths, it offers a quintessential Cotswold lifestyle while remaining conveniently close to a range of nearby towns and amenities. The picturesque market town of Burford is just a short drive away, known for its historic high street lined with independent boutiques, traditional pubs, and inviting cafés. The larger towns of Witney and Carterton are also within easy reach, offering a wider selection of supermarkets, restaurants, and everyday conveniences. For those seeking local produce and dining experiences, the area boasts a variety of farm shops, country pubs, and cosy tearooms. Despite its tranquil setting, Bradwell Village enjoys excellent connectivity, making it an ideal location for those looking to enjoy the best of both countryside serenity and modern convenience.



Council Tax Band: C



Nestled in the peaceful setting of Bradwell Village, just moments from the picturesque market town of Burford, Chestnut House is a beautifully presented, fully furnished home that offers the perfect balance of modern living and countryside charm. This delightful property is ideally located to enjoy the best of the Cotswolds, with Burford’s array of independent shops, cosy cafés, and breath-taking scenery just a short distance away.

As you step inside, you’re welcomed by a spacious, tastefully decorated hallway that includes a convenient cloakroom. The ground floor features a bright, contemporary kitchen filled with natural light, alongside a separate living room with a dining space. French doors open directly onto a beautifully decorated patio garden, creating a seamless indoor-outdoor living space that's perfect for relaxing or entertaining.

Upstairs, you'll find a stylish family bathroom featuring a full-sized bath, along with two generously sized double bedrooms. Both bedrooms include built-in wardrobes, making the most of the available space.

Contact agency for details about bills.